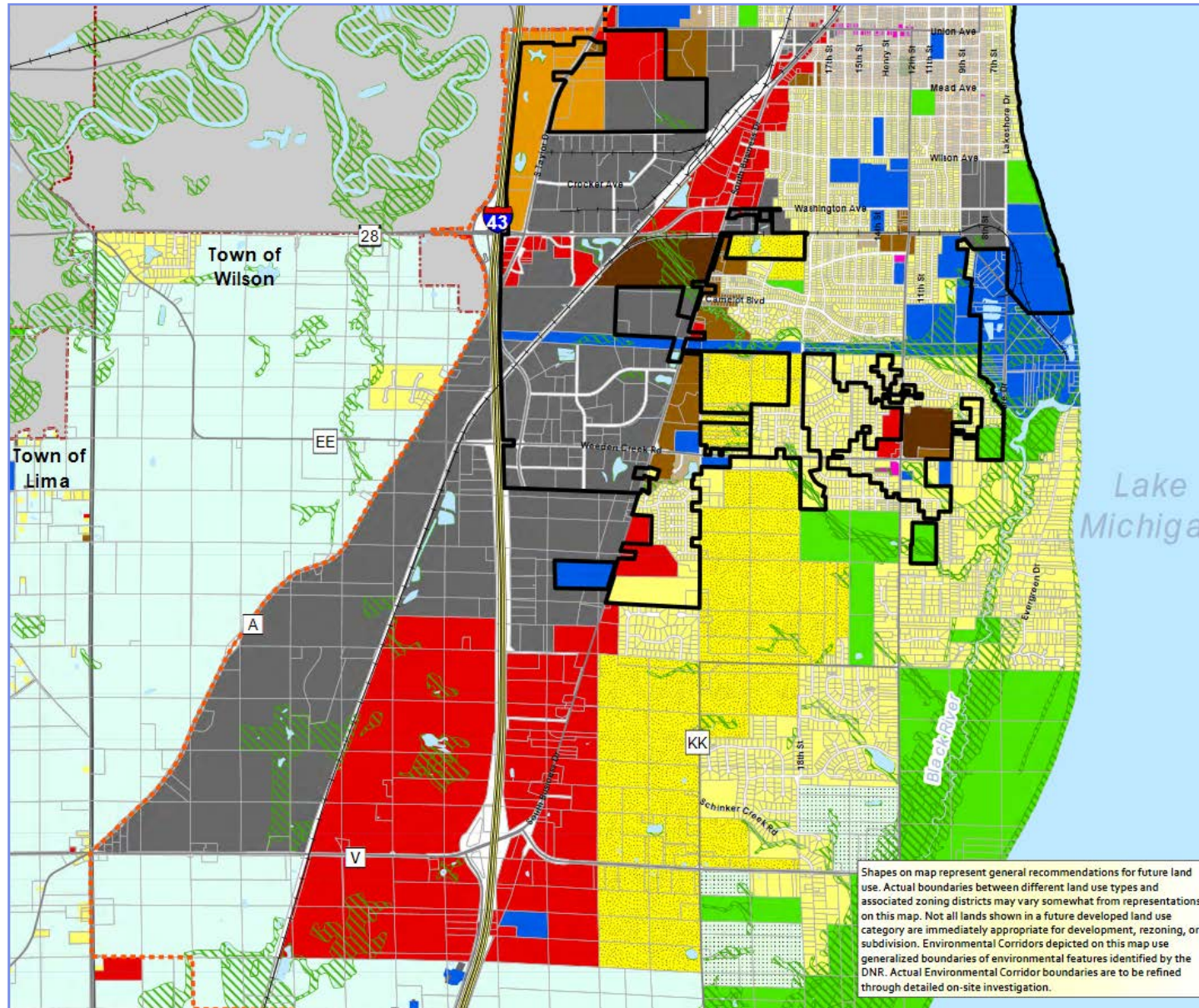


# City's Future Land Use Map for Town of Wilson:

*Shapes on map represent general recommendations for future land use in the Town of Wilson (2011).*

*Note that there are plans all the way south, past County V.*



**Map 2-4 Future Land Use - South**  
City of Sheboygan Comprehensive Plan

- City of Sheboygan Municipal Boundary
- Other City or Village Municipal Boundaries
- Town Boundaries
- City of Sheboygan Extraterritorial Jurisdiction
- Major Road
- Interstate
- Railroad
- Water
- Agricultural/Rural
- Single Family Residential
- Neighborhood Preservation
- Two Family Residential
- Multi Family Residential
- Mobile Home Park
- Planned Neighborhood
- Neighborhood Mixed Use
- Office Park
- Community Mixed Use
- Central Mixed Use
- Institutional and Community Facilities
- Employment
- Public Parks and Open Space
- Town Development Area
- Environmental Corridor

Shapes on map represent general recommendations for future land use. Actual boundaries between different land use types and associated zoning districts may vary somewhat from representations on this map. Not all lands shown in a future developed land use category are immediately appropriate for development, rezoning, or subdivision. Environmental Corridors depicted on this map use generalized boundaries of environmental features identified by the DNR. Actual Environmental Corridor boundaries are to be refined through detailed on-site investigation.

0 0.25 0.5 Miles

Adopted:  
12/5/2011

Data Sources:  
City of Sheboygan DNR Rav Lake RPC V&A Sheboygan County

